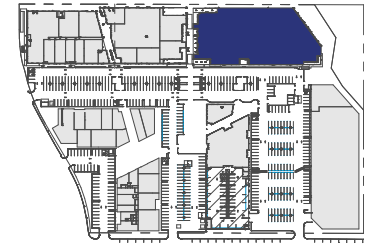


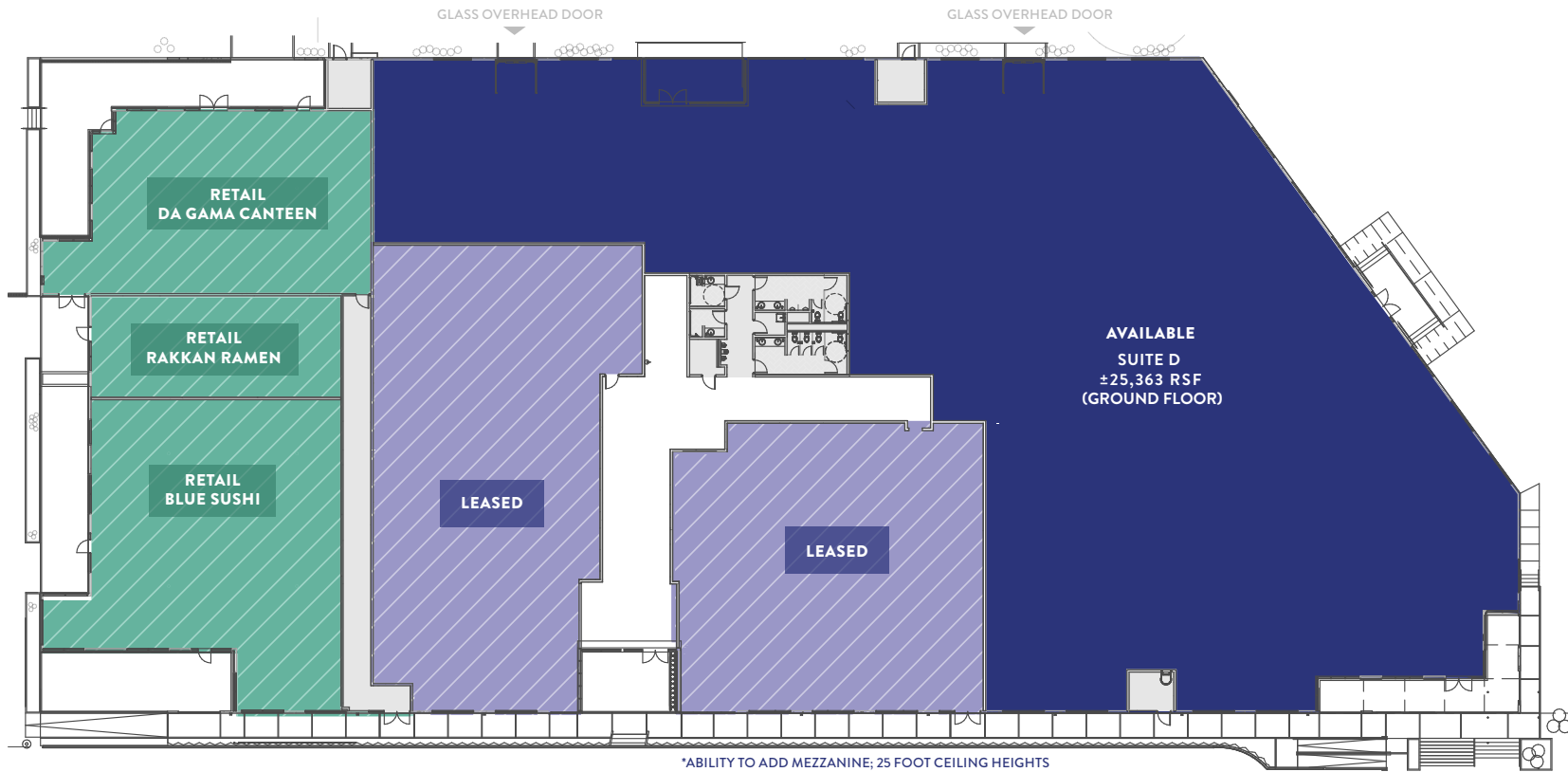


BUILDING 5

1ST FLOOR



HIKE AND BIKE TRAIL



BUBBA HARKINS

713 577 1723

bubba.harkins@cbre.com

JENNY SEALY

713 577 1730

jenny.sealy@cbre.com

NINA SEYYEDIN, J.D.

713 577 1598

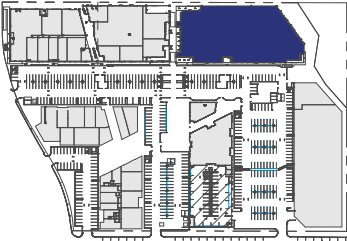
nina.seyyedin@cbre.com





BUILDING 5

SUITE D HYPOTHETICAL TEST FIT - 1ST FLOOR



TENANT 3
5,459 USF
6,267 RSF

TENANT 2
7,167 USF
8,228 RSF

TENANT 1
9,202 USF
10,564 RSF

LEVEL 1

TENANT 1
INDIVIDUAL OPEN 79
INDIVIDUAL CLOSED 6
TOTAL SEATS 85

TENANT 2
INDIVIDUAL OPEN 49
INDIVIDUAL CLOSED 9
TOTAL SEATS 58

TENANT 3
INDIVIDUAL OPEN 41
INDIVIDUAL CLOSED 4
TOTAL SEATS 45

BUBBA HARKINS
713 577 1723
bubba.harkins@cbre.com

JENNY SEALY
713 577 1730
jenny.sealy@cbre.com

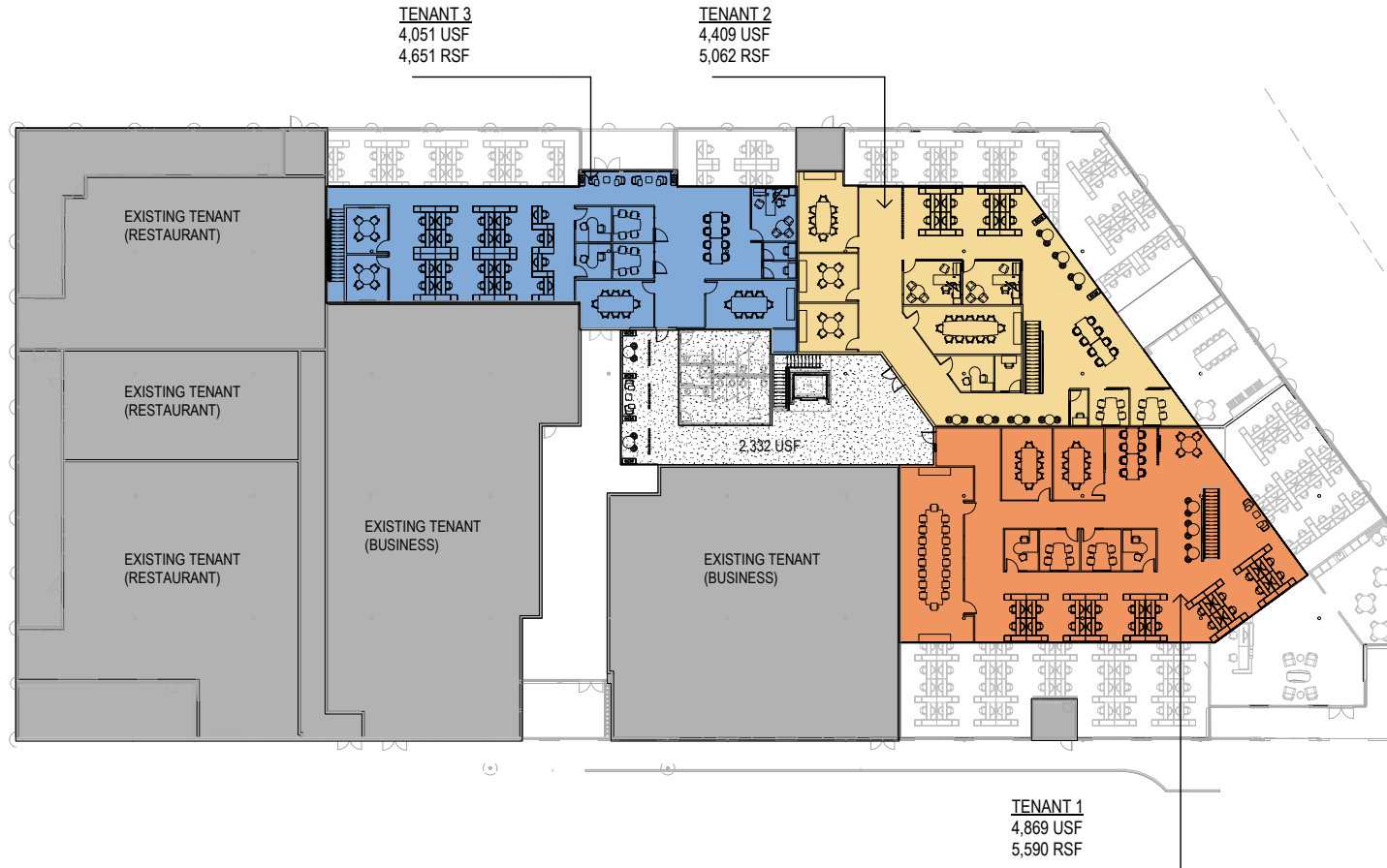
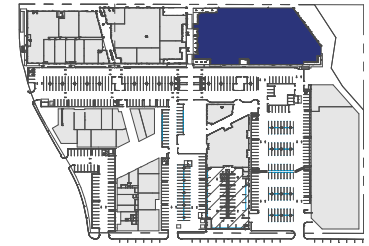
NINA SEYYEDIN, J.D.
713 577 1598
nina.seyyedin@cbre.com





BUILDING 5

SUITE D HYPOTHETICAL TEST FIT - 2ND FLOOR



LEVEL 2

TENANT 1

INDIVIDUAL OPEN	20
INDIVIDUAL CLOSED	2
TOTAL SEATS	22

TENANT 2

INDIVIDUAL OPEN	8
INDIVIDUAL CLOSED	3
TOTAL SEATS	11

TENANT 3

INDIVIDUAL OPEN	20
INDIVIDUAL CLOSED	3
TOTAL SEATS	23

BUBBA HARKINS

713 577 1723

bubba.harkins@cbre.com

JENNY SEALY

713 577 1730

jenny.sealy@cbre.com

NINA SEYYEDIN, J.D.

713 577 1598

nina.seyyedin@cbre.com





CREATIVE OFFICE

M-K-T is the transformation of 5 industrial buildings into a 200,000 square foot creative destination for innovative office, retail, restaurant and fitness tenants. Placed upon 12 acres of land on North Shepherd and 6th Street and sitting at the epicenter of Houston's award winning Heights Hike and Bike Trail, M-K-T provides tenants and visitors with a home for inspiration and innovation. M-K-T offers flexible, creative office space while encompassing all the perks

- 01** RETAIL, F&B, PERSONAL SERVICE 40,685 RSF
- 02** RETAIL 2,780 RSF | **OFFICE 12,310 RSF**
- 03** **OFFICE 44,025 RSF**
- 04** RETAIL, FITNESS, F&B 56,479 RSF
- 05** RETAIL, F&B 14,750 RSF | **OFFICE 30,650 RSF**